



Inverted Routine Microscope ECLIPSE Ts2

# ECLIPSE Ts2

Inverted Routine Microscope



Shedding New Light On **MICROSCOPY**



# Do more than before

Fits in every Laboratory — Simple to Use & Compact

## Easy to work with

### Efficient and comfortable observation

LED light sources and built-in Diascopic/Epi-fluorescence illumination systems reduce setup time and allow users to concentrate on their research.

### New streamlined operation

Control buttons on the Ts2 microscope are intuitively located for a streamlined workflow. Commonly used controls such as the on/off and diascope/epi-fluorescence switching buttons are located at the front panel for easy reach. Buttons pertaining to either diascope or epi-fluorescence control are zoned to the left and right sides of the microscope body, respectively, to eliminate confusion and improve workflow efficiency.



### Faster, brighter images with LED illumination

LED light source is alignment-free resulting in faster setup and consistent results. LEDs also eliminate frequent bulb replacements, saving the user time and money. Moreover, The new Contrast Shield (optional) provides high signal-to-noise fluorescence observation even in brightly lit culture rooms.



### Easy-to-use Mechanical Stage

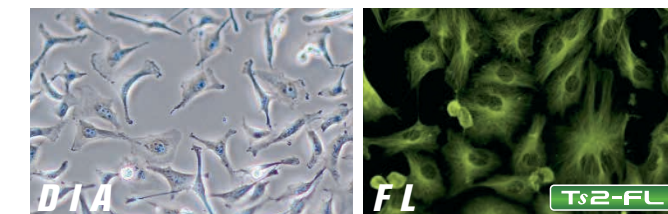
The high performance mechanical stage (optional) can accommodate a wide range of flasks and cell culture chambers. The new stage design also directly accommodates micro plates. In addition, the sample holder is easily removed to accommodate large flasks.



## Compact, streamlined body for efficient observation

### LED-based high-quality diascope and epi-fluorescence observation

Two models are available to meet your needs: a diascope illumination model, the Ts2, and an epi-fluorescence illumination model, the Ts2-FL. High-intensity LED sources are employed for both diascope and epi-fluorescence illumination. The built-in fly-eye lens ensures uniform brightness across the entire field of view. A wide range of wavelengths is available to choose from for Epi-fluorescence LED illumination.



### Compact and highly stable body

Illumination modules including the epi-fluorescence light source have been seamlessly incorporated into the microscope main body, resulting in a compact and simple design form that's also durable. The compact structure is also vibration-resistant to provide highly stable sample observations. The camera port is located on the side of the microscope to provide unimpeded viewing of the stage even when placed inside a culture hood.



**Ts2**

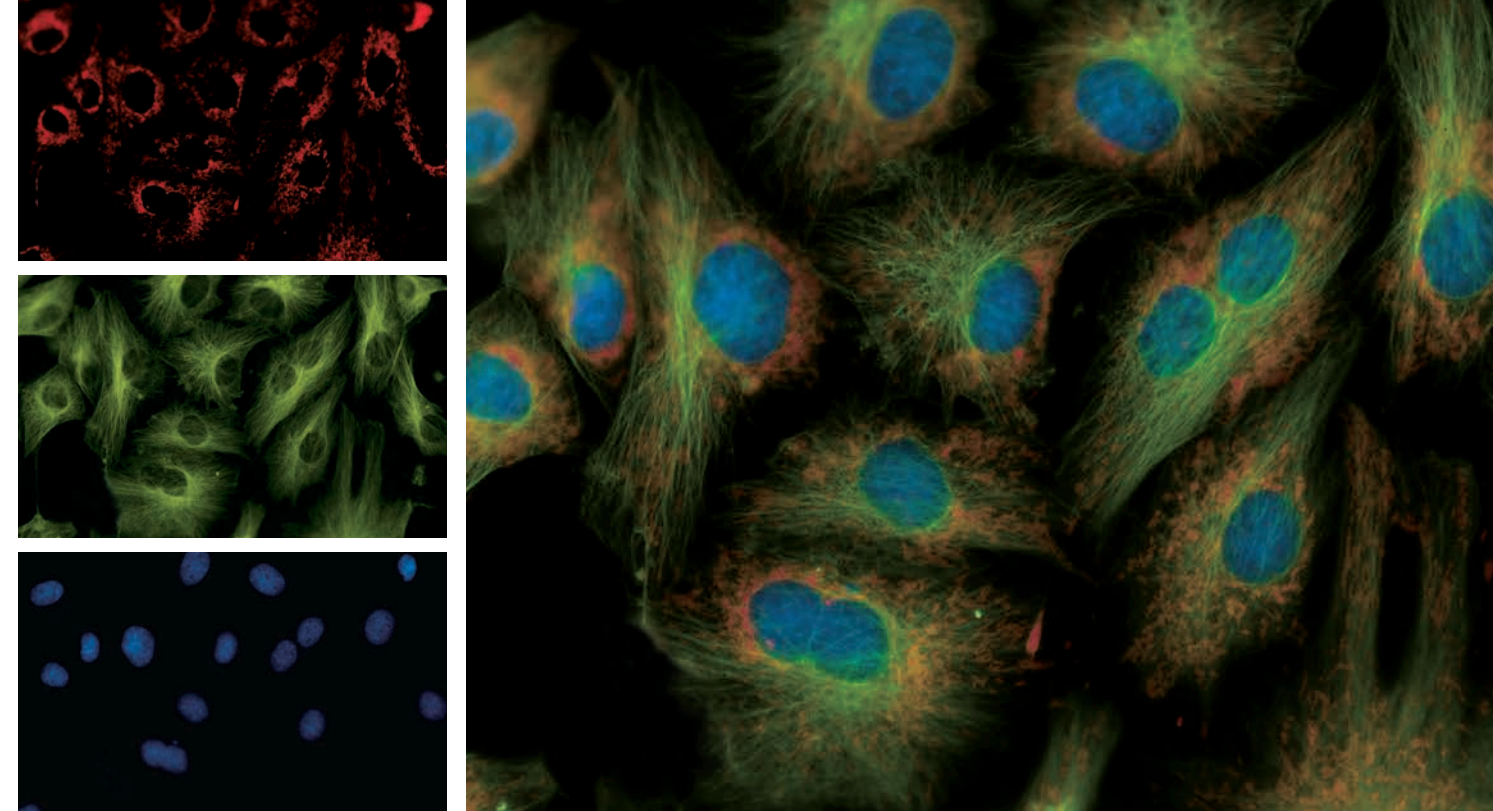
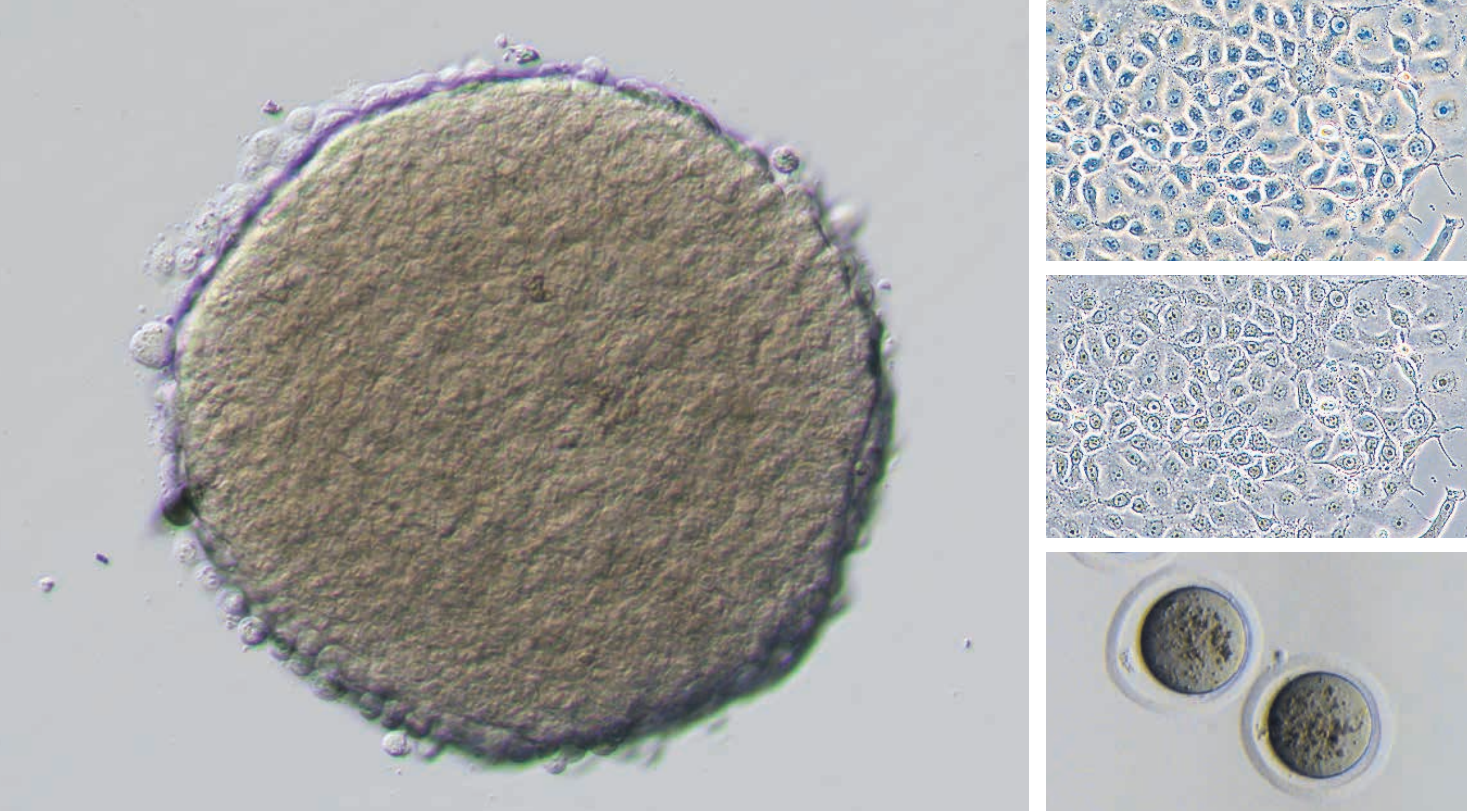
Diascopic illumination model



**Ts2-FL**

Diascopic and epi-fluorescence illumination model





Overlapping image with three colors with use of imaging Software NIS-Elements

Do more than before — **DIA**

**Ts2 Ts2-FL**

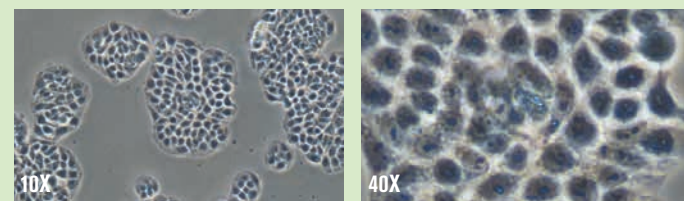
## Highly optical performance with diascopic observation

### Diascopic observation with high-intensity LED (Eco-illumination)

Eco-illumination provides high-intensity light suitable for phase contrast observation. With the built-in fly-eye lens, uniform brightness is provided across the entire field of view. LEDs are an environmentally friendly, low-power-consumption light source. Eco-illumination provides a long lifetime of 60,000 hours and reduces the frequency of lamp replacement.

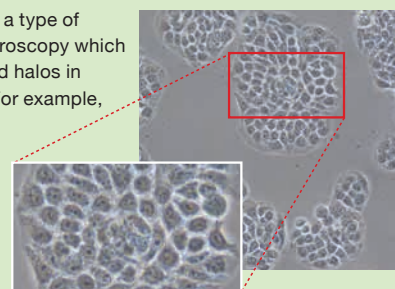
#### Phase contrast observation

Phase contrast is an optical contrasting technique that typically utilizes a phase contrast objective lens and condenser annulus. The use of a high-intensity LED light source results in clear images even at high magnifications.



#### Apodized Phase Contrast (APC) observation

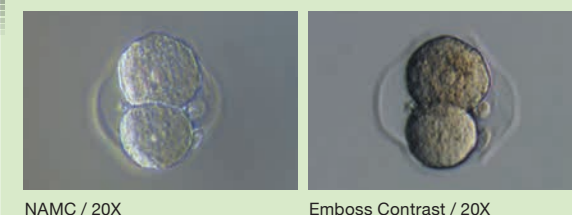
APC observation is a type of phase contrast microscopy which minimizes unwanted halos in thick specimens. For example, APC technique provides clearer details of thick samples such as dividing cells.



### New contrasting technique, "Emboss Contrast"

Emboss Contrast is a cost-effective optical technique which does not require costly optics. Utilizing just a bright-field objective lens and two contrast sliders, Emboss Contrast provides pseudo-three dimensional and glare-free images for thick specimens such as iPS cells which would normally suffer from halos with conventional phase contrast methods. Additionally, Emboss Contrast is compatible with both glass and plastic culture chambers, making it a very versatile observation technique.

#### Comparison of new Emboss Contrast and Nikon Advanced Modulation Contrast



Do more than before — **FL**

**Ts2-FL**

## Epi-fluorescence observation made easy with LED

### Fly-eye lens for uniform illumination

With a built-in fly-eye lens, uniform brightness is provided across the entire field of view.

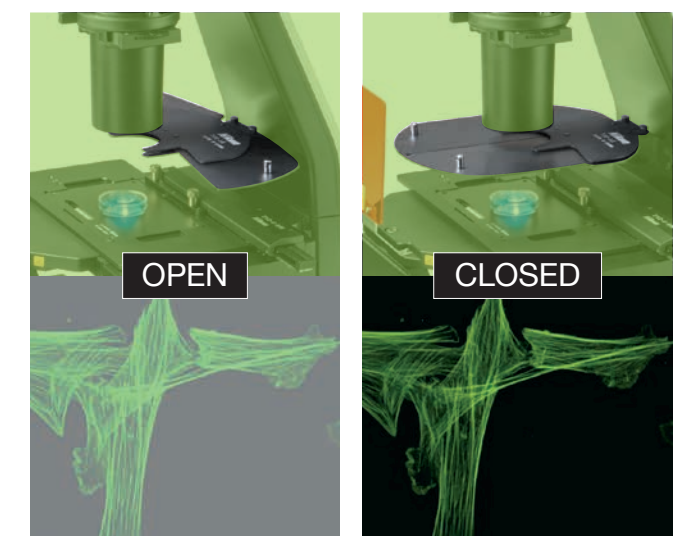
### Accurately reproduce illumination power every time

The Ts2 can be configured with up to three fluorescent filter cubes. The illumination power previously defined by the user is replicated when the same wavelength is used again, thus eliminating the need for manual adjustment of light intensity when switching between wavelengths. The Ts2 also incorporates a noise terminator mechanism which allows high signal-to-noise fluorescent images to be captured.



### High S/N epi-fluorescence observation in bright rooms

The new Contrast Shield accessory (optional) blocks room light, providing an easy and cost-effective method for achieving high signal-to-noise fluorescence observation in a brightly lit culture room.





Accessories

Camera Port

Optional camera port is available for image capturing. Digital Cameras utilizing C- or F-mounts can be attached.



ThermoPlate® TPi-TS2X (for the Mechanical Stage)

ThermoPlate® TPi-TS2X provides accurate and stable temperature control for the specimen from room temperature to 50 degrees Celsius. Proprietary treatment methods ensure that the glass surface of the Thermo Plate is breakage-free.

Manufacturer: TOKAI HIT Co.,Ltd.



Emboss Contrast Slider

Both condenser-side slider and eyepiece-tube-side slider are available. Contrast modules for 10X, 20X, 40X objective lenses are arranged on the same slider so switching between magnifications is easily achieved by simply sliding the contrast slider.



Cameras for microscopes

The Nikon Digital Sight series enhances the quality of the observation, recording, and analysis.

\*The optional camera port is required to attach the digital camera to the microscope.



C-mount CMOS Camera

Microscope camera  
**Digital Sight 1000**

2.0 megapixel  
Color  
Full HD



Microscope camera  
**Digital Sight 100**

17.7 megapixel  
Color  
High-resolution



Equipped with a 2 megapixel CMOS image sensor, the Digital Sight 1000 is an economical color camera solution that can directly display high-definition microscope images on a full HD display without the need for a PC.

The large field color camera (field number 25) with a 17.7 megapixel CMOS sensor. High-speed live viewing and PC-free observation via HDMI monitor connection.

\*When using the Digital Sight 100 with the Ts2, please use the 0.63x relay lens.

F-mount CMOS Camera

Microscope camera  
**Digital Sight 10**

23.9 megapixel  
Color/Monochrome  
High-resolution



Achieves color / monochrome switching shooting with a single camera. You can quickly capture high-definition images.



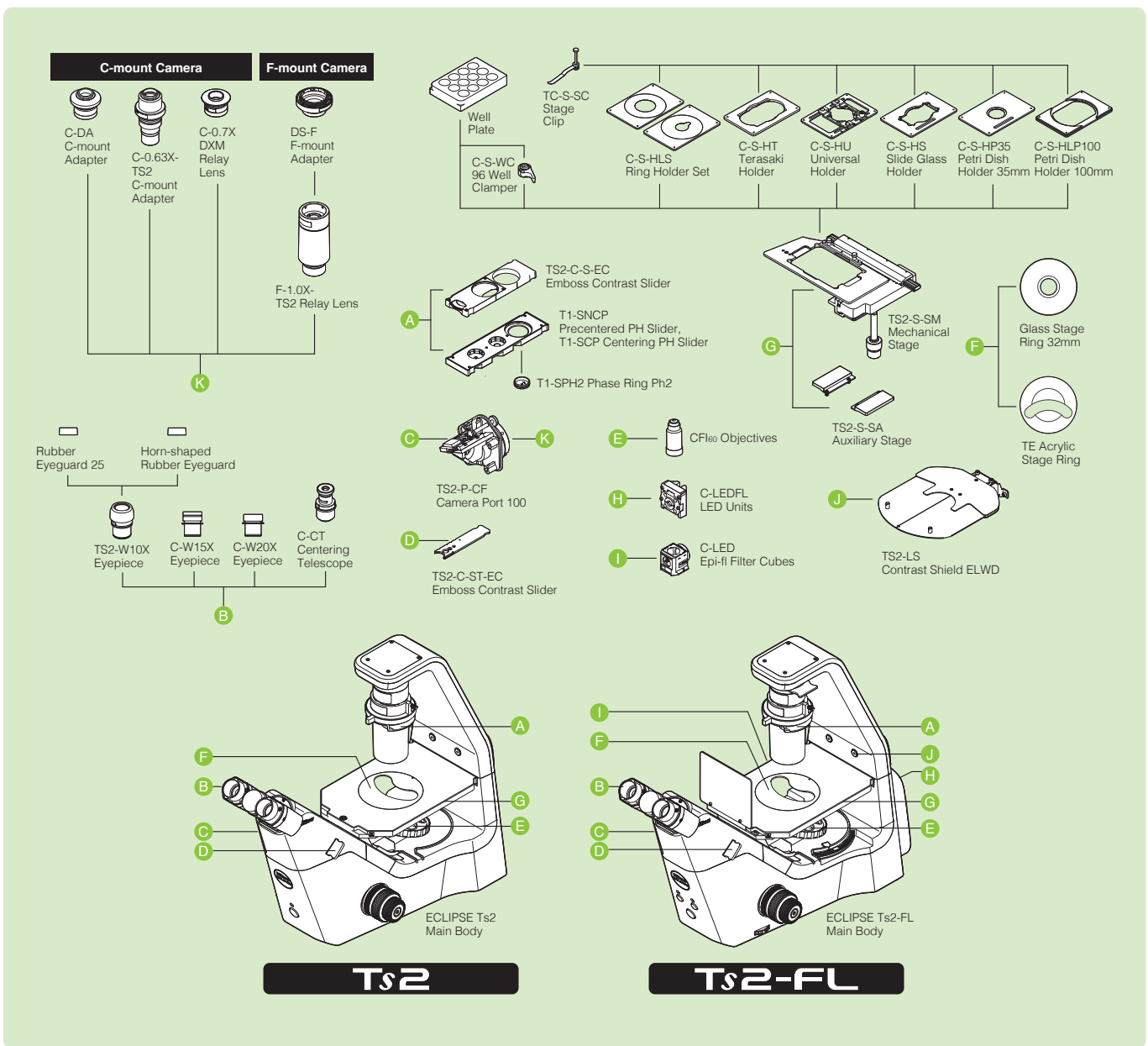
Allows intuitive control of microscope cameras from PCs

This free software package simplifies the setting and control of microscope cameras, live image display, and image acquisition. TIFF, JPEG, and ND2 are available formats for saving the acquired images.

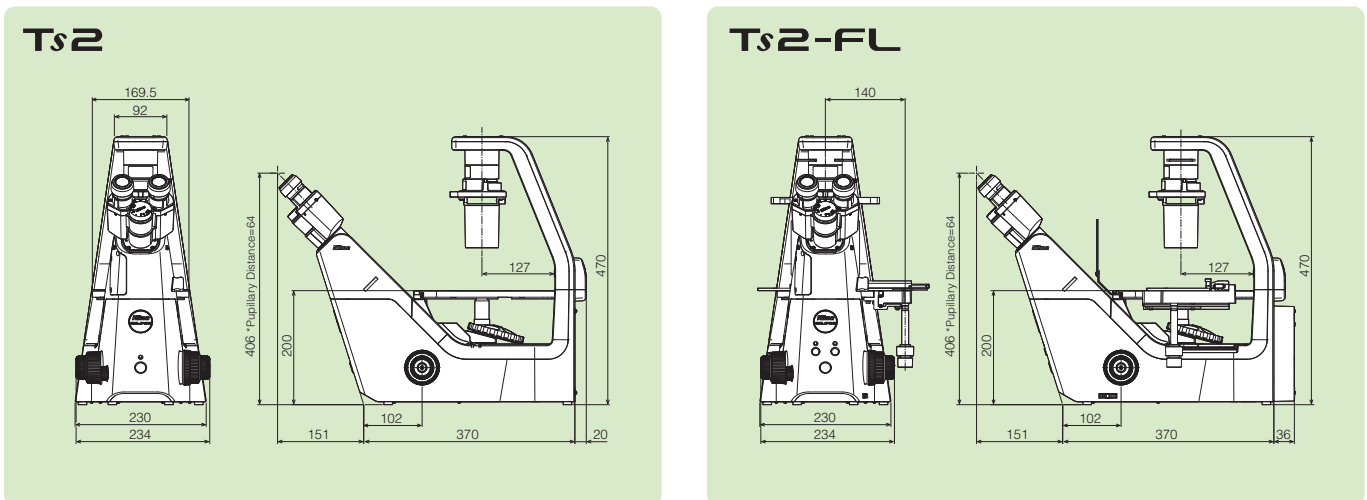
Supported cameras: Digital Sight 50M, Digital Sight 10, Digital Sight 100, Digital Sight 1000 (Compatible OS: Windows 11® Pro 64 bit) \*For information about compatible tablet PCs, contact Nikon.



System diagram



Dimensions (Unit: mm)



## Ts2 / Ts2-FL Specifications

|                                |                        | Ts2  | Ts2-FL  |
|--------------------------------|------------------------|--|---|
| Optical System                 |                        | CFL <sub>60</sub> Infinity Optical System  |   |
| Observation method             |                        | Brightfield, Apodized Phase Contrast*1, Phase Contrast, Emboss Contrast*2  | Brightfield, Apodized Phase Contrast*1, Phase Contrast, Emboss Contrast*2, Epi-Fluorescence   |
| Illumination                   | Diascopic illumination | High luminescent white LED illuminator (Eco-illumination), Built-in Fly eye lens   |   |
|                                | Episcopic illumination | —  | LED illuminator, built-in Fly eye lens. Can be configured with up to 3 different fluorescence LED units; available wavelengths: 385, 455, 470, 505, 525, 560, 590, 625 nm   |
| Tube                           |                        | Inclination: 45 degree, Pupillary distance: 50 - 75 mm, Siedentopf type, Attachable camera port, Eyepiece/Port: 100/0:0/100  |   |
| Eyepiece (F.O.V.)              |                        | 10X (22), 15X (16), 20X (12.5)   |   |
| Focusing                       |                        | Via nosepiece up/down movement, Stroke (manual): Up 7 mm down 1.5 mm<br>Coarse stroke: 37.7 mm per rotation, Fine stroke: 0.2 mm per rotation, Coarse motion torque adjustable   |   |
| Nosepiece                      |                        | Quintuple nosepiece  |   |
| Condenser                      |                        | ELWD Condenser (NA 0.3, W.D. 75 mm)  |   |
| Slider                         |                        | <ul style="list-style-type: none"> <li>Precentered or Centering PH Slider, 10X, 20X, 40X Objectives available for phase contrast</li> <li>Emboss Contrast sliders (both condenser-side slider and eyepiece-tube-side slider must be mounted), 10X, 20X, 40X objectives available for Emboss Contrast</li> </ul>  |   |
| Stage                          |                        | <ul style="list-style-type: none"> <li>Plain Stage, stage size: 170(X)×247(Y) mm, With 2 Acrylic Types of Stage Ring</li> <li>Mechanical stage (optional), stroke:126(X)×78(Y) mm, Accepts 5 types of micro-testplate, well clammer and stage clip</li> </ul>  |   |
| Holder                         |                        | <ul style="list-style-type: none"> <li>C-S-HP35 Petridish Holder 35 mm</li> <li>C-S-HLP100 Petridish Holder 100 mm</li> <li>C-S-HT Terasaki Holder for Terasaki holder and ø65 dish</li> <li>C-S-HS Slide Glass Holder for glass slides, ø54 dish and hemocytometer</li> <li>C-S-HU Universal Holder for Terasaki plate holder, glass slide, ø35-65 dish and hemocytometer</li> <li>C-S-HLS Ring Holder Set</li> </ul> |   |
| Epi Fluorescence attachment    |                        | —  | Epi-fluorescence filter turret (with main body), Filter cubes with noise terminator mechanism<br>Configure with up to 3 Epi-fluorescence filter cubes, Additional positions for bright-field observation, Attachable Contrast Shield (optional) |
| Dimensions                     |                        | 236(W)×548(D)×471(H) mm  | 236(W)×564(D)×471(H) mm   |
| Weight (approx.)               |                        | 13kg   | 14.5kg  |
| Rated Voltage/Electric Current |                        | 100 V-240 VAC±10 %, 50/60 Hz, 0.35 A   |   |
| Power Consumption              |                        | 15 W   |   |

\*1 APC (Apodized Phase Contrast) is a type of phase contrast observation with reduced halo, thanks to Nikon's unique lens coating.

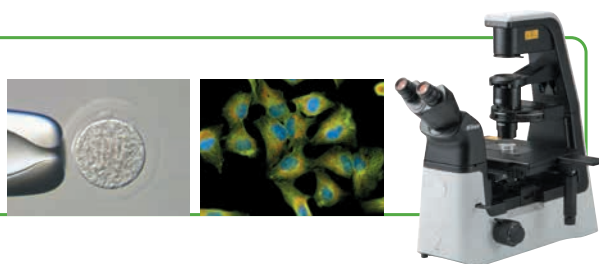
\*2 Emboss contrast is Nikon's unique contrast observation method. It provides pseudo-three-dimensional images using focal illumination, which gives high contrast to samples.

### Related Products

## ECLIPSE Ts2R / Ts2R-FL

A compact inverted microscope for your basic research needs.

Ts2R/Ts2R-FL provides a wide range of observation methods and applications in a compact body that can easily fit in limited laboratory spaces while providing streamlined operation.



Specifications and equipment are subject to change without any notice or obligation on the part of the manufacturer. December 2025 ©2016-2025 NIKON CORPORATION

N.B. Export of the products\* in this brochure is controlled under the Japanese Foreign Exchange and Foreign Trade Law. Appropriate export procedures shall be required in case of export from Japan.

\*Products: Hardware and its technical information (including software)



**WARNING**

TO ENSURE CORRECT USAGE, READ THE CORRESPONDING MANUALS CAREFULLY BEFORE USING THE EQUIPMENT.



### NIKON CORPORATION

Head office

1-5-20, Nishio, Shinagawa-ku, Tokyo, 140-8601, Japan

<https://www.healthcare.nikon.com/en/>

Manufacturer

471, Nagaodai-cho, Sakae-ku, Yokohama,

Kanagawa 244-8533, Japan

ISO 14001 Certified  
for NIKON CORPORATION

#### Nikon Instruments Inc.

1300 Walt Whitman Road, Melville, N.Y. 11747-3064, U.S.A.

phone: +1-631-547-8500; +1-800-52-NIKON (within the U.S.A. only)

fax: +1-631-547-0299

<https://www.microscope.healthcare.nikon.com/>

#### Nikon Europe B.V.

Stroombaan 14, 1181 VX Amstelveen, The Netherlands

phone: +31-20-7099-000

[https://www.microscope.healthcare.nikon.com/en\\_EU/](https://www.microscope.healthcare.nikon.com/en_EU/)

#### Nikon Precision (Shanghai) Co., Ltd.

CHINA phone: +86-21-6841-2050 fax: +86-21-6841-2060

(Beijing branch) phone: +86-10-5831-2028 fax: +86-10-5831-2026

(Guangzhou branch) phone: +86-2-3882-0551 fax: +86-2-3882-0580

<https://www.nikon-precision.com.cn/>

#### Nikon Canada Inc.

CANADA phone: +1-905-625-9910 fax: +1-905-602-9953

#### Nikon France, Succursale de Nikon Europe B.V.

FRANCE phone: +33-1-4516-4516

#### Nikon Deutschland, Zweigniederlassung der Nikon Europe B.V.

GERMANY phone: +49-211-9414-888

#### Nikon Italy, Branch of Nikon Europe B.V.

ITALY phone: +39-055-300-9601

#### Nikon Europe B.V., Amstelveen,

Zweigniederlassung Schweiz (Egg/ZH)

SWITZERLAND phone: +41-43-277-2867

#### NIKON UK, Branch of Nikon Europe B.V.

UNITED KINGDOM phone: +44-208-247-1717

#### Nikon Österreich, Zweigniederlassung der Nikon Europe B.V.

AUSTRIA phone: +43-1-972-6111

#### Nikon Singapore Pte Ltd

SINGAPORE phone: +65-6559-3651 fax: +65-6559-3668

#### Nikon Australia Pty Ltd

AUSTRALIA phone: +61-2-8767-6900

#### Nikon Instruments Korea Co., Ltd.

KOREA phone: +82-2-6288-1900 fax: +82-2-555-4415

#### NIKON INDIA PVT. LTD.

INDIA phone: +91-124-4688-500