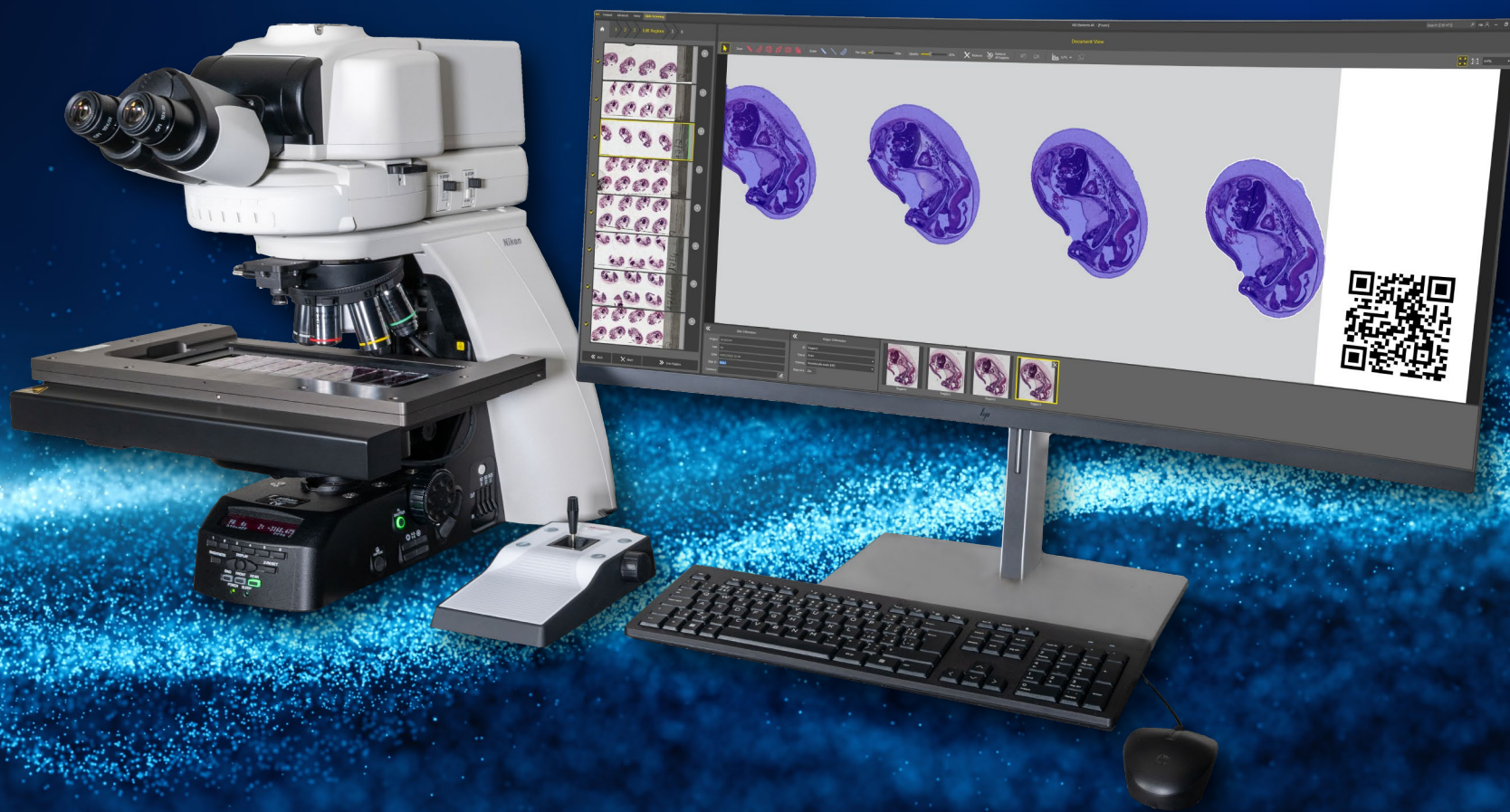


# Slide Scanning Module

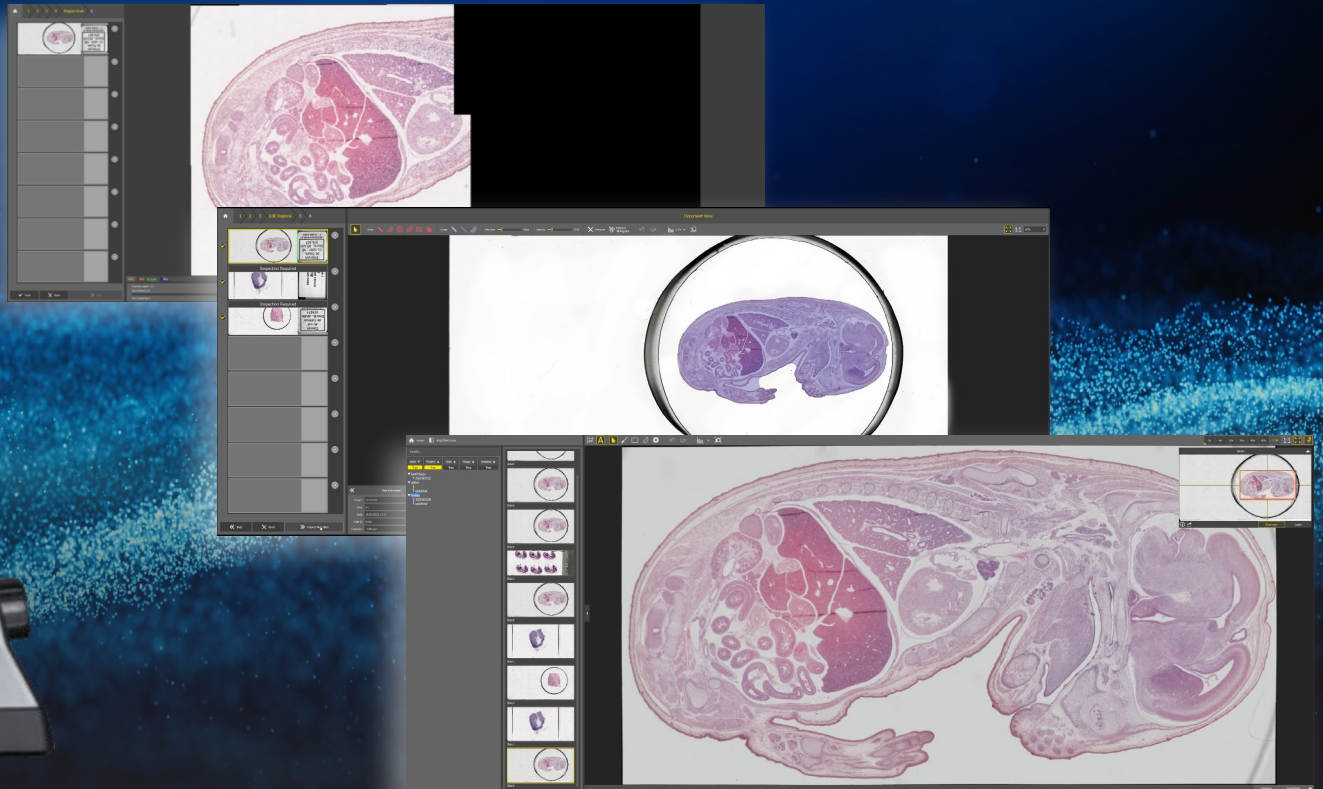




# Slide scanning made easy without compromising on optical quality.

The new slide scanning solution from Nikon brings together the best of both worlds: a user friendly, yet extremely powerful software module that has been developed for robust, reliable hardware.

Using the ECLIPSE Ni-E microscope in combination with the brand new NIS-Elements Slide Scanning module, finally there is no need to sacrifice image quality for the sake of simplicity.





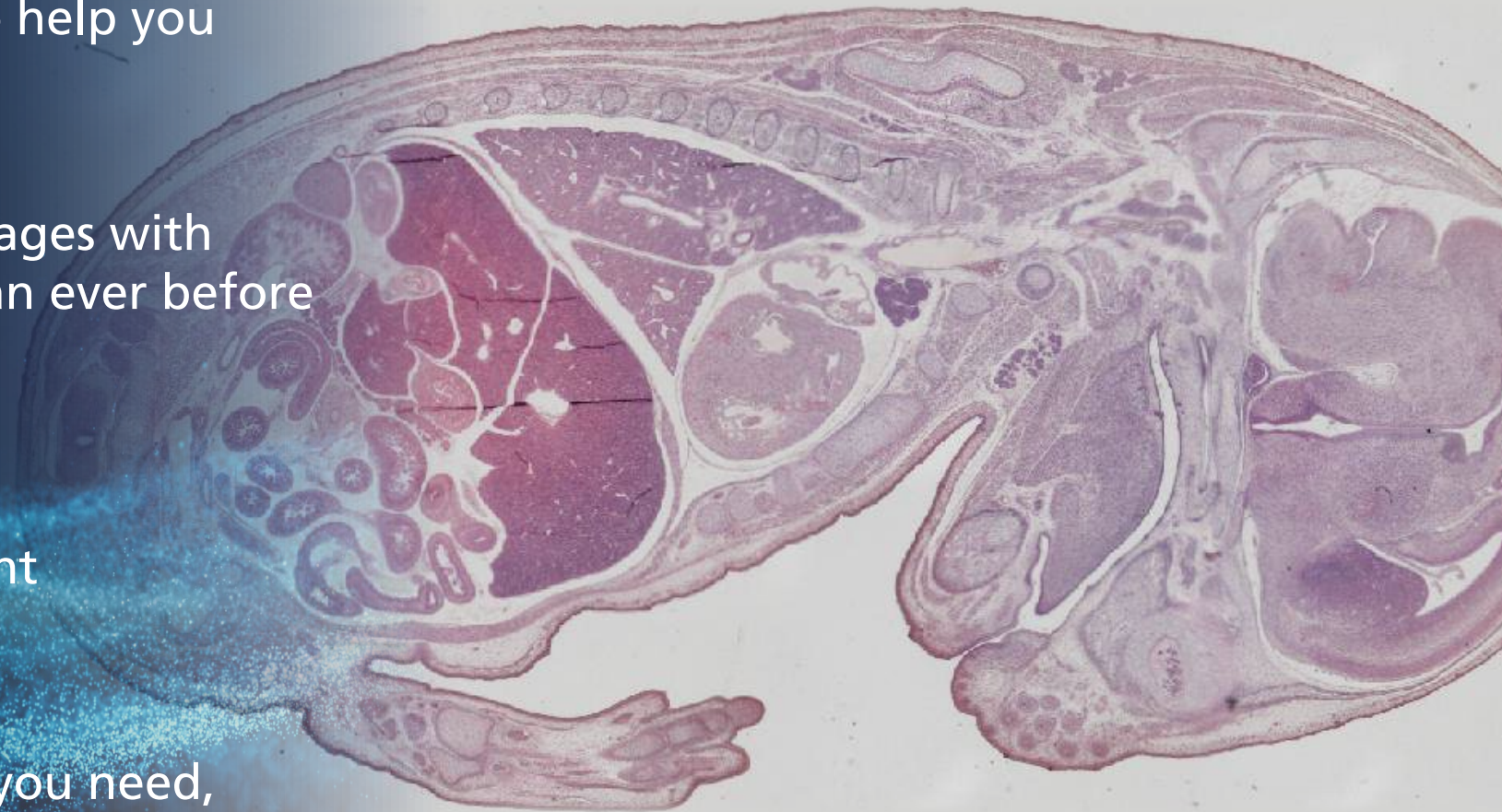
✓ A simple workflow for maximum convenience

✓ An intelligent system you can trust to help you

✓ See scanned images with more clarity than ever before

✓ Spend time on what's important

✓ Visualize what you need, the way you'd like

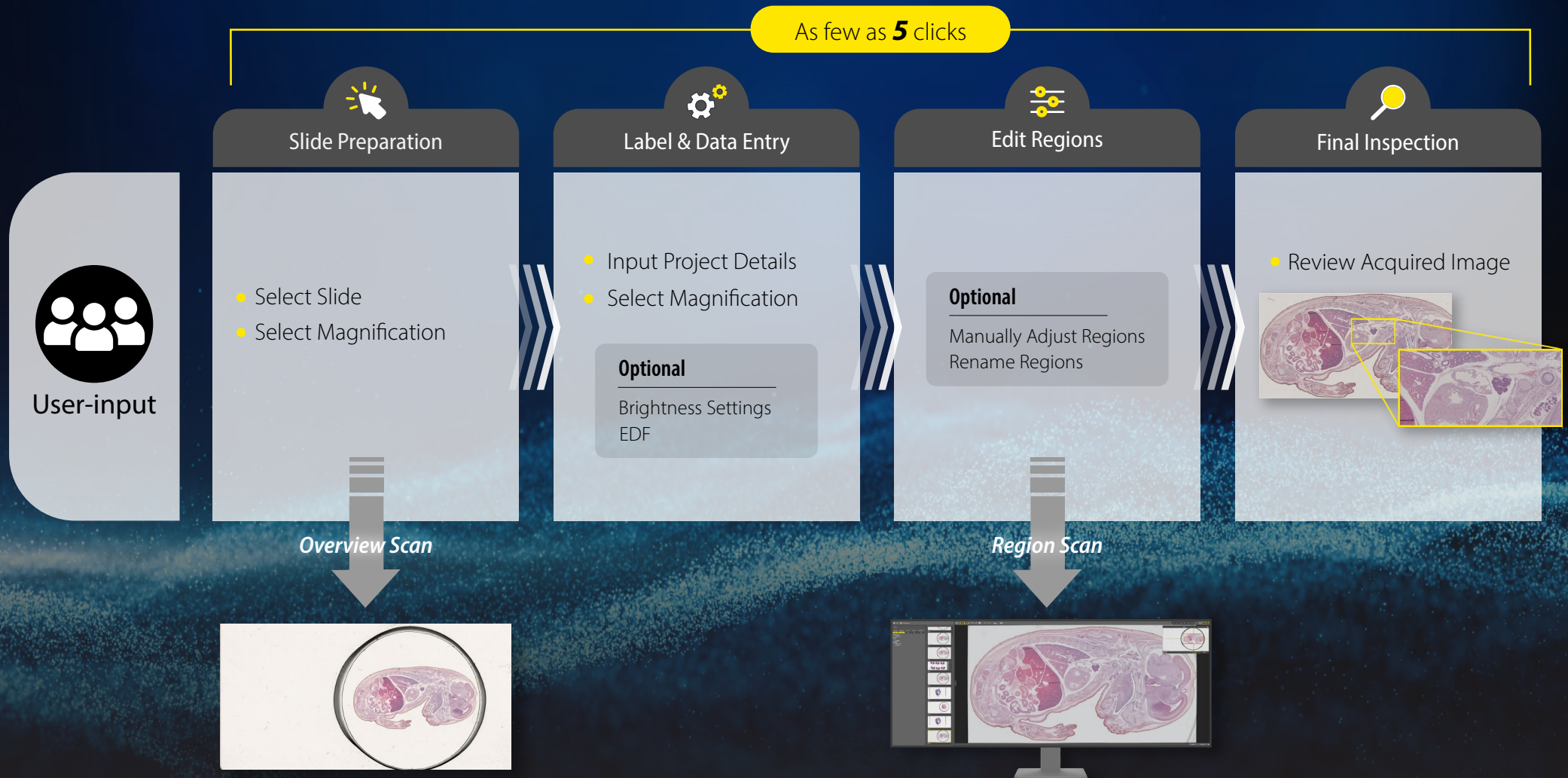


Mouse embryo stained with hematoxylin eosin

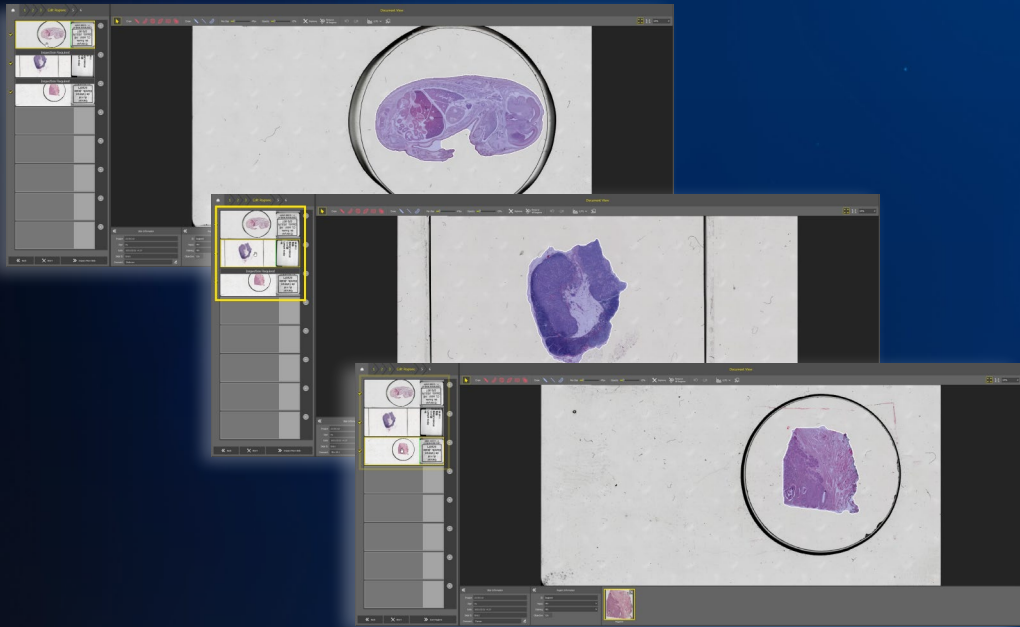


## A simple workflow for maximum convenience

Follow each step and use already predefined settings to get started with scanning. No previous imaging experience needed.







## An intelligent system you can trust to help you

To make your scanning workflow even smoother, our AI can automatically detect regions to be scanned, find the most optimal light settings, and ensure that your sample is always in focus.

Low quality images can finally become a thing of the past.



## See scanned images with more clarity than ever before

Collecting data fast shouldn't mean you have to compromise on image quality. The combination of Nikon's renowned optics with the NIS-Elements Slide Scanning module allows you to get the best image quality in as little time as possible.







## Spend time on what's important

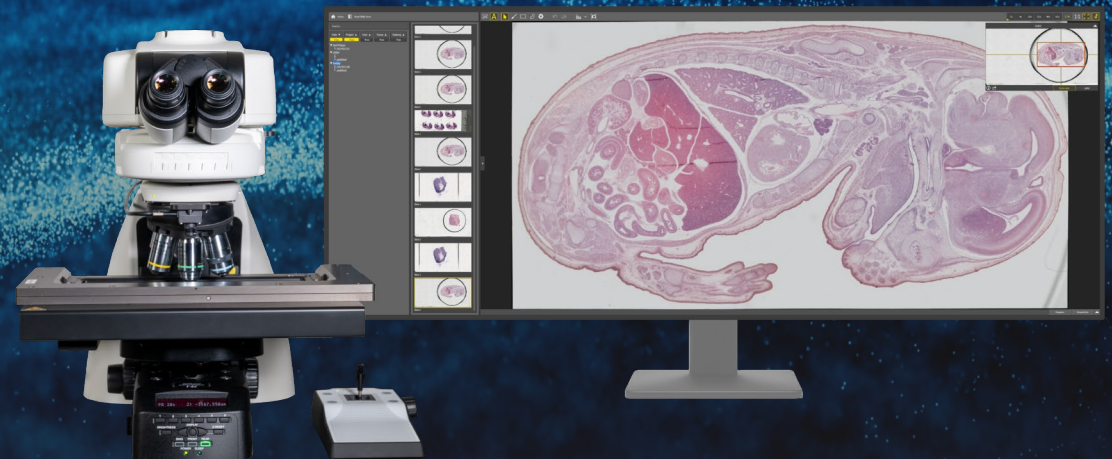
Acquiring your desired images shouldn't take long. You can scan entire tissue sections even under a minute\* making use of our fast stage and precise tiling.

\*See specifications for details



## Visualize what you need, the way you'd like

You can easily find and visualize any of your scanned images with the convenient gallery view.



# Specifications

Optical system	CFI60 Infinity Optical System *1
Resolution	10X: 0.34 µm / pixel 20X: 0.17 µm / pixel 40X: 0.09 µm / pixel
Brightfield illumination	High colour rendering LED light source
Brightness settings	AI-assisted automatic brightness settings
Stage	Motorized stage to hold 8 standard (75 x 25 mm) slides Travel range: max. 225 x 76 mm Travel speed: max. 240 mm/s Resolution: 0.01 µm
Removable slide tray	Yes, for 8 slides
Piezo	Optional - 250 µm travel range
Scanning speed	55s of an approx. scan area of 15 mm x 15 mm using 20X magnification and 100 µs camera exposure time
Focus mechanism	AI-assisted autofocus
Z-Stack option	Extended Depth of Focus (EDF)
Nosepiece	6 position motorized nosepiece
Condenser	Motorized universal condenser Dry (NA 0.88)
Colour camera	5MP, up to 75 fps, CMOS sensor
Sample recognition	AI-assisted region detection
Barcode	1D: Codabar, Code39, Code93, Code128, EAN8, EAN13, ITF, DataBar, DataBarExpanded, UPCA, UPCE  2D: Aztec, DataMatrix, MaxiCode, PDF417, QRCode, MicroQRCode, RMQRCode
File format	ND2, OME-TIFF, JPEG

\*1 - limitations may apply

This product is research use only and should not be used for in vitro diagnostics.

**Specifications and equipment are subject to change without any notice or obligation on the part of the manufacturer.**  
**March 2025 ©2025 Nikon Europe B.V.**



## WARNING

TO ENSURE CORRECT USAGE, READ THE CORRESPONDING MANUALS  
 CAREFULLY BEFORE USING THE EQUIPMENT.

Company names appearing in this brochure are their registered trademarks or trademarks.



## NIKON EUROPE B.V.

Stroombaan 14, 1181 VX Amstelveen, The Netherlands

Phone: +31-20-7099-000

[https://www.microscope.healthcare.nikon.com/en\\_EU/](https://www.microscope.healthcare.nikon.com/en_EU/)